

CHARACTERISTICS

MLT 629 20" ST3B

I.C. ENGINE		
Type		PERKINS 854E-E34TA JR82239
Fuel		Diesel
Number of cylinders		4 in line
Suction		Turbocharged
Injection system		Direct
Ignition sequence		1.3.4.2
Capacity	cm ³	3400
Bore and stroke	Mm	99 x 110
Compression ratio		17:1
Nominal speed laden	rpm	2200
Idling speed slow unladen	rpm	850
Max. speed unladen	rpm	2350
Power ISO/TR 14396	cv - kW	102 - 75
Power SAE J 1995	cv - kW	102 - 75
Maximum torque ISO/TR 14396	Nm	420 to 1400 rpm
Air cleaner	µm	3
Type of cooling		By water/air
Fan		Puller

TRANSMISSION		
Gear box		TURNER POWERTRAIN SYSTEMS
- Type		Mechanical
- Forward/ reverse switch		Electro-hydraulic
- Torque converter		SACHS
- Number of forward speeds		4
- Number of reverse speeds		4
Angle gear box		-
Front axle		DANA
- Differential		Without locking
Rear axle		DANA
- Differential		Without locking
Drive wheels		4RM Permanent
- Switch for 2/4 drive wheels		No
Front tires		DUNLOP
- Size		400/70-20 T37 150B TUBELESS
- Pressure	bar	2,75
Rear tires		DUNLOP
- Size		400/70-20 T37 150B TUBELESS
- Pressure	bar	2,75

ELECTRIC CIRCUIT		
Battery	STANDARD OPTION	12 V - 145 Ah - 900 A EN
Alternator		12 V - 100 A
- Type		ISKRA AAK-EF
Starter		12 V - 3,2 kW
- Type		ISKRA AZE

BRAKE CIRCUIT		
Service brake		Non-servo hydraulic brake
- Type of brake		Multidisk brake immersed in oil
- Type of control		Foot-operated for the front and rear axles
Parking brake		Mechanical
- Type of brake		Multidisk brake immersed in oil
- Type of control		Manual

SOUND AND VIBRATION		
Sound pressure level in the driver's cab LpA (according to NF EN 12053)	dB(A)	76 (cab closed); 00 (cab open)
Sound pressure (according to directive 2009/76)	dB(A)	00 (cab closed); 00 (cab open)
Sound pressure level ensured in the LwA environment (according to directive 2000/14/EC modified by directive 2005/88/EC)	dB(A)	105 (measured); 106 (guaranteed)
Sound level in motion (according to directive 2009/63)	dB(A)	
Average weighted acceleration on driver's body (according to NF EN 13059)	m/s ²	1,0
The average weighted acceleration transmitted to the driver's hand/ arm system (as per ISO 5349-2)	m/s ²	< 2,5
Standard seat vibration	m/s ²	00 (lightweight operator); 00 (heavyweight operator)

HYDRAULIC CIRCUIT			
Hydraulic pump		CASAPPA	
- Type		Gear pump	
		1st casing	2nd casing
- Capacity	cm ³	31,4	-
- Max. rating capacity unladen	L/min	83,0	-
- Flow rate at 1600 rpm	L/min	56,5	
Filtration			
- Return	µm	10	-
- Suction	µm	125	-
Maximum service pressure		260	
- Telescoping circuit	bar	190 / 260	
- Lifting circuit	bar	260 / 260	
- Tilt circuit	bar	260 / 190	
- Stabilizer system	bar	-	
- Roll corrector circuit	bar	-	
- Attachment circuit	bar	260	
- Steering circuit	bar	140	

HYDRAULIC MOVEMENTS			
Longitudinal stability limiter and warning device		Electronic	
Lifting motions (boom retracted)			
- Unladen lifting	s - m/min	7,34 - 31,2	
- Laden lifting	s - m/min	7,47 - 30,6	
- Unladen lowering	s - m/min	5,56 - 41,2	
- Laden lowering	s - m/min	5,19 - 44,1	
Telescoping motions (boom raised)			
- Unladen extending	s - m/min	4,8 - 22	
- Laden extending	s - m/min	4,85 - 22,3	
- Unladen retracting	s - m/min	3,02 - 35,4	
- Laden retracting	s - m/min	3,34 - 32	
Tilting movements			
- Unladen digging	s - °/s	3,72 - 41,4	
- Forward tilting unladen	s - °/s	3,52 - 43,8	

SPECIFICATIONS AND WEIGHTS			
Speed of movement for lift truck in standard configuration on flat ground (except particular conditions)			
- Forward unladen	1	km/h	4,5
	2	km/h	7,2
	3	km/h	15,3
	4	km/h	27,3
- Rear unladen	1	km/h	4,5
	2	km/h	7,2
	3	km/h	15,3
	4	km/h	27,3
Standard attachment			PFB
- Weight with forks		Kg	105
- Weight of forks (each one)		Kg	72,5
Rated capacity with standard attachment		Kg	2900
Tipping load at maximum reach on tyres		Kg	1650
Distance from the center of gravity from the load to the lug of the forks		Mm	500
Standard lifting height		Mm	5500
Weight of lift truck without attachment		Kg	5775
Weight of lift truck with standard attachment			
- Unladen		Kg	6025
- At rated load		Kg	8925
Weight per axle with standard attachment (transport position)			
- Front unladen		Kg	2735
- Rear unladen		Kg	3290
- Front rated load		Kg	7945
- Rear rated load		Kg	980
Weight per axle with standard attachment (boom extended)			
- Front rated load		Kg	6605
- Rear rated load		Kg	720
Drag strain on the coupling hook			
- Unladen (sliding)		daN	4060
- At rated load (transmission setting)		daN	6270
Pull strain with open carrier (according to ISO 8313)		daN	3990

TIRES

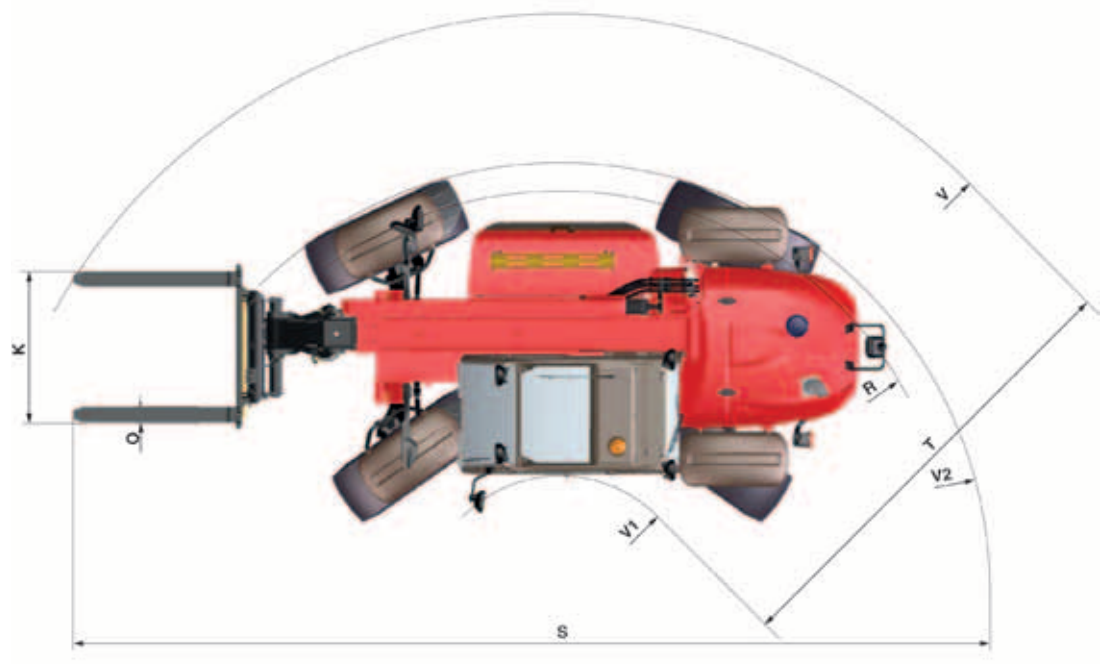
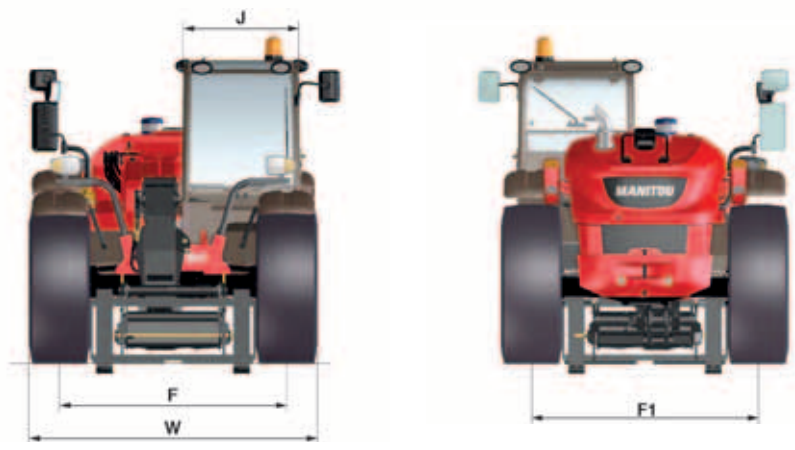
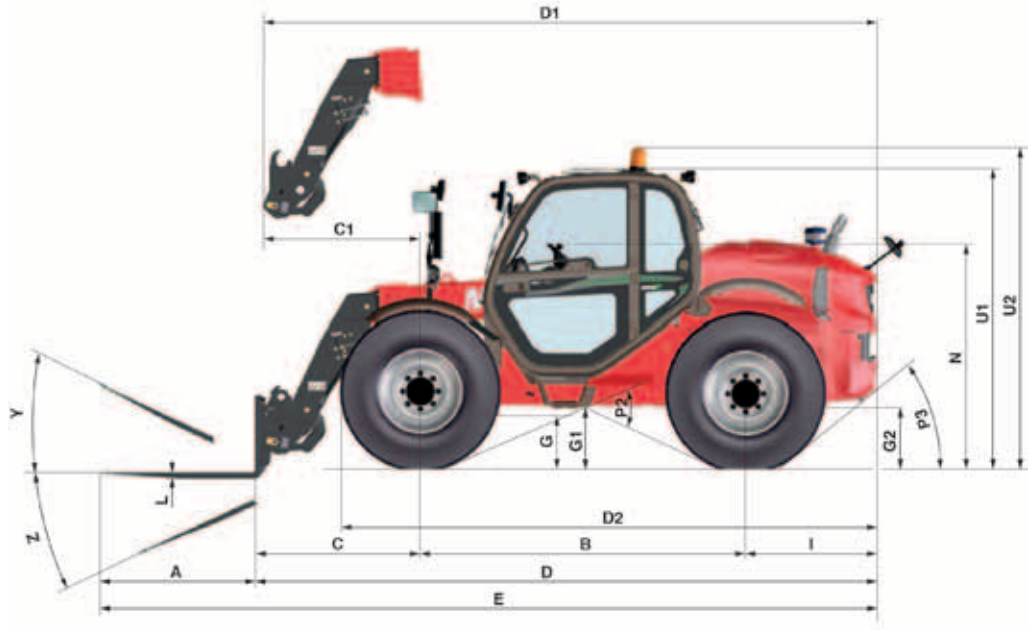
MLT 629 Compact 20" ST3B		PRESSURE (bar)	LOAD PER TYRE (kg)			
DUNLOP	400/70-20 T37 150B TUBELESS		FRONT UNLADEN	FRONT LADEN	REAR UNLADEN	REAR LADEN
MICHELIN	400/70R20 XMCL 149A8 TUBELESS	2,75	1350	3950	1650	500
		3,8				

MLT 629 20" ST3B		PRESSURE (bar)	LOAD PER TYRE (kg)			
DUNLOP	400/70-20 T37 150B TUBELESS		FRONT UNLADEN	FRONT LADEN	REAR UNLADEN	REAR LADEN
MICHELIN	400/70R20 XMCL 149A8 TUBELESS	2,75	1350	3950	1650	500
		3,8				

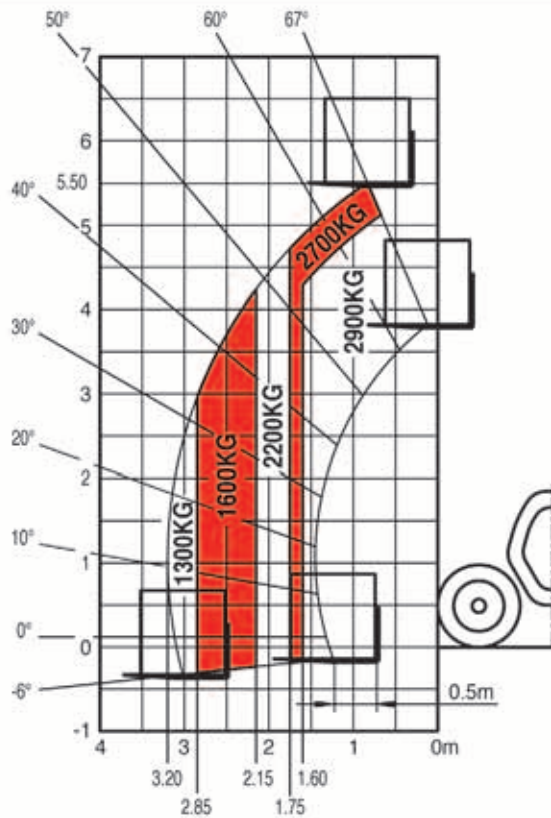
MLT 629 24" ST3B MLT 629 24" CE ST3B		PRESSURE (bar)	LOAD PER TYRE (kg)			
DUNLOP	405/70R24 EM SPT9 158A2 TUBELESS		FRONT UNLADEN	FRONT LADEN	REAR UNLADEN	REAR LADEN
GOODYEAR	460/70R24 IT520 150A8 TUBELESS	2,8	1400	4000	1700	550
	15,5/80-24 SGI 12PR TUBELESS	3,8				
	445/70R24 IT510 151G TUBELESS	2,4				
MICHELIN	460/70R24 XMCL 159A8 TUBELESS	2,7				

		PRESSURE (bar)	LOAD (kg)	GROUND CONTACT PRESSURE (kg/cm ²)		GROUND CONTACT AREA (cm ²)	
				HARD SOIL	LOOSE SOIL	HARD SOIL	LOOSE SOIL
				DUNLOP	400/70-20 T37 150B TUBELESS	2,75	500
			1350	6,70	2,15	198	618
			1650	7,10	2,27	232	724
			3950	9,71	3,04	402	1286
	405/70R24 EM SPT9 158A2 TUBELESS	3,5	550	5,96	2,07	93	268
			1400	5,79	2,22	242	632
			1700	5,86	2,24	290	759
			4000	6,50	2,49	615	1605
GOODYEAR	460/70R24 IT520 150A8 TUBELESS	2,8	550	3,51	1,09	158	505
			1400	6,03	1,59	232	883
			1700	6,69	1,75	254	970
			4000	9,80	2,52	408	1585
	15,5/80-24 SGI 12PR TUBELESS	3,8	550	7,73	2,15	70	250
			1400	7,46	2,00	187	696
			1700	7,94	2,16	214	786
			4000	11,30	3,05	353	1309
	445/70R24 IT510 151G TUBELESS	2,4	550	8,23	2,48	67	222
			1400	8,19	2,48	171	564
			1700	8,20	2,48	207	684
			4000	8,18	2,48	440	1450
MICHELIN	400/70R20 XMCL 149A8 TUBELESS	3,8	500	4,10	1,20	122	418
			1350	6,28	1,88	215	720
			1650	6,85	2,05	241	804
			3950	9,97	3,05	396	1297
	460/70R24 XMCL 159A8 TUBELESS	2,7	550	4,70	1,20	117	460
			1400	4,91	1,69	285	829
			1700	5,40	1,81	315	937
			4000	8,20	2,49	488	1607

A	mm	1200
B	mm	2520
C	mm	1307
C1	mm	1260
D	mm	4837
D1	mm	4790
D2	mm	4075
E	mm	6037
F	mm	1600
F1	mm	1600
G	mm	400
G1	mm	365
G2	mm	365
I	mm	1010
J	mm	866
K	mm	1260
L	mm	45
N	mm	1565/1605
O	mm	125
P2	°	41
P3	°	34,5
R	mm	3385
S	mm	7356
T	mm	3520
U1	mm	2210
U2	mm	2470
V	mm	4770
V1	mm	1250
V2	mm	3589
W	mm	2007
Y	°	11,8
Z	°	142,3



MLT629-20"



SUIVANT NORME EN 1459 annexe B.

N°311685

